

COMPLETE MET SYSTEMS

RESOURCE ASSESSMENT AND POWER PERFORMANCE



NRGSystems®

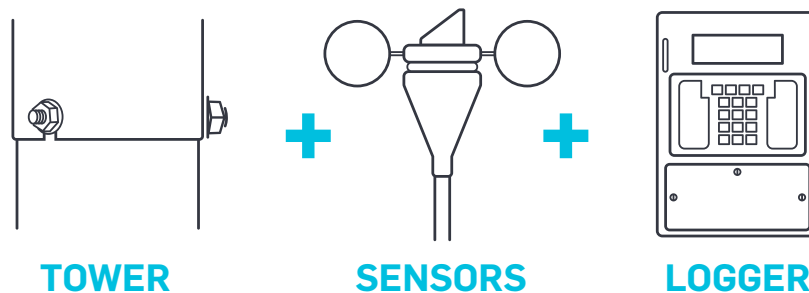
COMPLETE MET SYSTEMS

NRG Systems designs complete systems made up of components that work together seamlessly and suit a variety of climates, terrains, and applications.

- ▶ Save time and money with a complete system purchase.
- ▶ Unrivaled ease of use via integrated, purpose-built system components.
- ▶ Full suite of sensor offerings to suit your preferred configuration.
- ▶ Avoid delays and logistical headaches by single-sourcing your equipment.

FULLY INTEGRATED MEASUREMENT SYSTEMS

Available in four different tower heights, NRG NOW Systems include everything necessary for your campaign—tower, sensors, logger and accessories—pre-configured and ready to ship within days of order placement. Our complete package approach ensures that the entire system arrives together, at one time, simplifying installation and saving time and money.



Each NOW System consists of three separate equipment kits, allowing you to customize your system by aligning your tower, sensors, and logger with the needs of your project.

IT'S ALL IN THERE

NRG NOW Systems are shipped in our innovative, compact **Envirocrate™** packaging for ease of transport and assembly with minimal waste on site. We'll have your system ready to ship just days after your order is placed.*



*See website for details.

“Ordering a NOW System not only reduces cost, it allows installers of all levels the comfort of having a complete, ready-to-install tower on site with world class levels of instrumentation suitable for all environments.”

EDDIE SHEEHAN
MICRO WIND SYSTEMS

TOWER OPTIONS

Constructed of sturdy galvanized steel, NRG TallTowers are reliable and easy to transport to remote sites. No cranes or concrete foundations are required for installation. Strong steel tube sections slide together and are tilted up from the ground using a ginpole and heavy duty winch. Standardized FAA markings and equipment are available to meet your project needs. All NRG towers are backed by our unrivaled engineering design and two-year warranty.



Have existing NRG TallTowers that you are recommissioning? Are you performing routine maintenance? NOW System Sensor and Wire Replacement Kits make it easy to outfit your met masts and ensure a high quality measurement campaign.*

*Before installing a used tower, be sure to check our Retrofit Kit FAQs for important safety considerations and helpful reminders about best practices.

80m XHD TallTower™

Obtain reliable data at or near hub-height and lower uncertainty. Built to withstand heavy ice and wind loads, this tower meets the applicable sections of ANSI/TIA-222-G. This tower system features strong steel tube construction, bolted tube sections for even greater load-bearing capacity, and a reinforced steel base plate.

Super 60m XHD TallTower

The Super 60m XHD is a highly versatile meteorological tower designed specifically for wind resource assessment in harsh climates. Because it is based on the same design as the 80m XHD, an optional 20 meter tube section enables expansion to 80 meters, providing more system flexibility to meet your long term project needs.

60m and 50m XHD TallTower

Now, more than ever, the 60m XHD TallTower is the industry standard for reliable, bankable data, especially when used in conjunction with a Lidar remote sensing device. We engineered the 50m and 60m XHD based on decades of experience with designing and manufacturing tilt-up towers for the global wind energy industry. Built for durability and extreme weather survival, our towers are packaged for easy delivery and installation.

34m TallTower

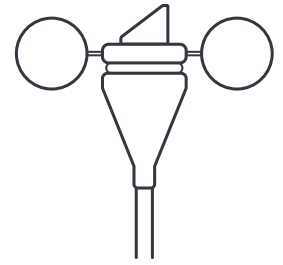
Ideal for smaller-scale or remote distributed wind energy projects where the installation of taller towers may not be possible. The 34m maximizes portability without compromising tower strength, allowing for reliable data collection at even the hardest-to-reach sites. Low material costs make this tower one of our most economical resource assessment options.









	INDUSTRY STANDARD	EXTREME CLIMATES + ICING	COMMUNITY + PRE-FINANCE
80m XHD NOW System	X	X	
Super 60m XHD NOW System	X	X	
60m XHD NOW System	X		
50m XHD NOW System	X		
34m XHD NOW System	X		X

SENSOR OPTIONS

Use our comprehensive line of met sensors in your next resource assessment campaign, power performance test, or permanent reference tower. Benefit from the durability and consistent performance we have built into our sensors over more than 30 years of providing measurement solutions to the wind energy industry. NRG offers options to suit every budget and application.



Anemometers

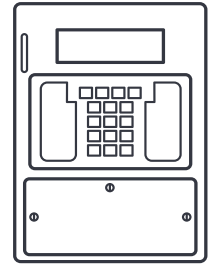
					
<p>NRG Class 1 The ideal, low-cost solution for wind resource assessment projects that require an anemometer with class 1A compliance.</p>	<p>Thies First Class A class 1 anemometer that delivers high-end performance in any terrain.</p>	<p>WindSensor P2546-OPR Combines class 1 performance with unrivaled durability.</p>	<p>NRG 40C Offer field-proven measurement accuracy at an economical price.</p>	<p>NRG IceFree3 Heated Simple, robust design provides a proven and reliable solution in icing environments.</p>	<p>RM Young 27106T Vertical Measure vertical wind speed at your project site.</p>

Vanes and Other Met Sensors

					
<p>NRG 200P Wind Vane One of the most widely used wind direction sensors in wind, solar, and meteorological applications.</p>	<p>NRG IceFree3 Heated Vane Proven and reliable solution for measuring wind direction in icing environments.</p>	<p>BP20 Barometric Pressure Sensor A micro-machined absolute pressure sensor that provides a high-level voltage output signal proportional to absolute pressure.</p>	<p>110S Temperature Sensor Durable and economical integrated circuit temperature sensor that provides a high level voltage output signal.</p>	<p>RH5X Relative Humidity Sensor A low-cost continuous measurement relative humidity sensor.</p>	<p>NRG offers various types of pyranometers to suit any resource assessment campaign.</p>

DATA LOGGER

SymphoniePRO

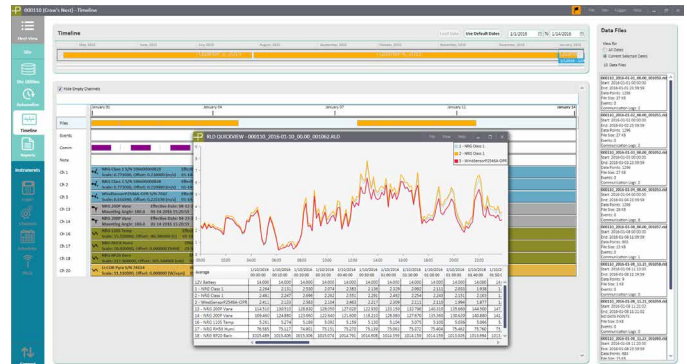


Unrivalled Ease-of-Use and Integrated Hardware Design

An advanced data logging system that is purpose-built for the renewable energy professional. SymphoniePRO® is NRG's most powerful data logger to date, offering significant upgrades in terms of capability and flexibility while building on the unparalleled foundation that is the Symphonie product line; a series of application-specific and user-friendly data loggers.

Modern and Intuitive Desktop Software

Symphonie Desktop Application is engineered to work seamlessly with the SymphoniePRO data loggers to configure equipment, process data, and manage your fleet of measurement stations.



iPacks

Automate the transfer of measurement data from your project site to your desktop with a Symphonie® iPack. iPackGPS network options include Iridium or BGAN Satellite, 3G, GSM/GPRS, and CDMA, and iPackACCESS is designed for SCADA systems. All iPacks are covered by NRG's two-year warranty and lifetime technical support.

ABOUT NRG SYSTEMS

NRG is the only company that designs, manufactures, and supports fully integrated resource assessment solutions. Our measurement products and technical services are purpose-built for the global renewable energy industry. NRG pioneered wind resource assessment more than 30 years ago, when the wind industry was just beginning. Today, we serve multiple stages of wind and solar project development, from site assessment to commercial operation, in more than 160 countries.

SERVICES + SUPPORT

All NRG towers and equipment are backed by our unrivaled engineering design, lifetime technical support, and two-year warranty. Get the technical information you need quickly online or contact our responsive, expert team directly by phone or email.

For more information:

NRG Sales

+1 802.482.2255

sales@nrgsystems.com

nrgsystems.com

ISO 9001: 2015 Certified

ISO 14001: 2015 Self-Certified



NRGSystems®